



CURSO SISTEMATIZAÇÃO DO ESTUDO MORFOLÓGICO FETAL

TABELAS

Porto Alegre, 2009



ÍNDICE DE TABELAS	pág
BIOMETRIA DE HADLOCK (trabalho original)	3
Saco Gestacional x Idade Gestacional	4
CCN x IDADE GESTACIONAL (cm)	5
IG x DBP (2.6 cm - 9.7 cm)	6
Diagnosis of Fetal Microcephaly	7
CIRCUNFERÊNCIA CEFÁLICA - PERCENTIS	8
CIRCUNFERÊNCIA ABDOMINAL - PERCENTIL	9
CIRCUNFERÊNCIA ABDOMINAL x IG	10
FEMUR IG	11
Marcadores US para Trissomia 21	12
Ossos Longos Fetais (mm) x IG	13
Índice de Líquido Amniótico (Moore & Cayle)	14
Circunferência Torácica Fetal	15
MEDIDA DO OSSO NASAL	16
Diâmetro Transverso Cerebelar (mm)	17
DOPPLER ARTÉRIA UMBILICAL (IR)	18
ESTUDO MORFOLÓGICO FETAL BÁSICO	19



TABELA RESUMO DA BIOMETRIA DE HADLOCK (trabalho original)

TABLE III: Predicted Fetal Measurements at Specific Menstrual Age

Menstrual Age (wks)	Biparietal Diameter (cm)*	Head Circumference (cm)†	Abdominal Circumference (cm)‡	Femur Length (cm)§
12.0	1.7	6.8	4.6	0.7
12.5	1.9	7.5	5.3	0.9
13.0	2.1	8.2	6.0	1.1
13.5	2.3	8.9	6.7	1.2
14.0	2.5	9.7	7.3	1.4
14.5	2.7	10.4	8.0	1.6
15.0	2.9	11.0	8.6	1.7
15.5	3.1	11.7	9.3	1.9
16.0	3.2	12.4	9.9	2.0
16.5	3.4	13.1	10.6	2.2
17.0	3.6	13.8	11.2	2.4
17.5	3.8	14.4	11.9	2.5
18.0	3.9	15.1	12.5	2.7
18.5	4.1	15.8	13.1	2.8
19.0	4.3	16.4	13.7	3.0
19.5	4.5	17.0	14.4	3.1
20.0	4.6	17.7	15.0	3.3
20.5	4.8	18.3	15.6	3.4
21.0	5.0	18.9	16.2	3.5
21.5	5.1	19.5	16.8	3.7
22.0	5.3	20.1	17.4	3.8
22.5	5.5	20.7	17.9	4.0
23.0	5.6	21.3	18.5	4.1
23.5	5.8	21.9	19.1	4.2
24.0	5.9	22.4	19.7	4.4
24.5	6.1	23.0	20.2	4.5
25.0	6.2	23.5	20.8	4.6
25.5	6.4	24.1	21.3	4.7
26.0	6.5	24.6	21.9	4.9
26.5	6.7	25.1	22.4	5.0
27.0	6.8	25.6	23.0	5.1
27.5	6.9	26.1	23.5	5.2
28.0	7.1	26.6	24.0	5.4
28.5	7.2	27.1	24.6	5.5
29.0	7.3	27.5	25.1	5.6
29.5	7.5	28.0	25.6	5.7
30.0	7.6	28.4	26.1	5.8
30.5	7.7	28.8	26.6	5.9
31.0	7.8	29.3	27.1	6.0
31.5	7.9	29.7	27.6	6.1
32.0	8.1	30.1	28.1	6.2
32.5	8.2	30.4	28.6	6.3
33.0	8.3	30.8	29.1	6.4
33.5	8.4	31.2	29.5	6.5
34.0	8.5	31.5	30.0	6.6
34.5	8.6	31.8	30.5	6.7
35.0	8.7	32.2	30.9	6.8
35.5	8.8	32.5	31.4	6.9
36.0	8.9	32.8	31.8	7.0
36.5	8.9	33.0	32.3	7.1
37.0	9.0	33.3	32.7	7.2
37.5	9.1	33.5	33.2	7.3
38.0	9.2	33.8	33.6	7.4
38.5	9.2	34.0	34.0	7.4
39.0	9.3	34.2	34.4	7.5
39.5	9.4	34.4	34.8	7.6
40.0	9.4	34.6	35.3	7.7

* BPD = $-3.08 + 0.41 (MA) - 0.000061 MA^3$; $r^2 = 97.6\%$; 1 SD = 3 mm.

† HC = $-11.48 + 1.56 (MA) - 0.0002548 MA^3$; $r^2 = 98.1\%$; 1 SD = 1 cm.

‡ AC = $-13.3 + 1.61 (MA) - 0.00998 MA^3$; $r^2 = 97.2\%$; 1 SD = 1.34 cm.

§ FL = $-3.91 + 0.427 (MA) - 0.0034 MA^3$; $r^2 = 97.5\%$; 1 SD = 3 mm.



Saco Gestacional x Idade Gestacional			
MÉDIA SG (cm)	IG (semanas)	MÉDIA SG (cm)	IG (semanas)
1.0	5.0	3.6	8.8
1.1	5.2	3.7	8.9
1.2	5.3	3.8	9.0
1.3	5.5	3.9	9.2
1.4	5.6	4.0	9.3
1.5	5.8	4.1	9.5
1.6	5.9	4.2	9.6
1.7	6.0	4.3	9.7
1.8	6.2	4.4	9.9
1.9	6.3	4.5	10.0
2.0	6.5	4.6	10.2
2.1	6.6	4.7	10.3
2.2	6.8	4.8	10.5
2.3	6.9	4.9	10.6
2.4	7.0	5.0	10.7
2.5	7.2	5.1	10.9
2.6	7.3	5.2	11.0
2.7	7.5	5.3	11.2
2.8	7.6	5.4	11.3
2.9	7.8	5.5	11.5
3.0	7.9	5.6	11.6
3.1	8.0	5.7	11.7
3.2	8.2	5.8	11.9
3.3	8.3	5.9	12.0
3.4	8.5	6.0	12.2

From Hellman LM, Kobayashi M, Fillisti L et al.: Growth and development of the human fetus prior to the twentieth week of gestation. Amer J Obstet Gynecol 103:789, 1969



CCN x IDADE GESTACIONAL (cm)											
CRL	IG	CRL	IG	CRL	IG	CRL	IG	CRL	IG	CRL	IG
0.2	5.7	2.2	8.9	4.2	11.1	6.2	12.6	8.2	14.2	10.2	16.1
0.3	5.9	2.3	9.0	4.3	11.2	6.3	12.7	8.3	14.2	10.3	16.2
0.4	6.1	2.4	9.1	4.4	11.2	6.4	12.8	8.4	14.3	10.4	16.3
0.5	6.2	2.5	9.2	4.5	11.3	6.5	12.8	8.5	14.4	10.5	16.4
0.6	6.4	2.6	9.4	4.6	11.4	6.6	12.9	8.6	14.5	10.6	16.5
0.7	6.6	2.7	9.5	4.7	11.5	6.7	13.0	8.7	14.6	10.7	16.6
0.8	6.7	2.8	9.6	4.8	11.6	6.8	13.1	8.8	14.7	10.8	16.7
0.9	6.9	2.9	9.7	4.9	11.7	6.9	13.1	8.9	14.8	10.9	16.8
1.0	7.2	3.0	9.9	5.0	11.7	7.0	13.2	9.0	14.9	11.0	16.9
1.1	7.2	3.1	10.0	5.1	11.8	7.1	13.3	9.1	15.0	11.1	17.0
1.2	7.4	3.2	10.1	5.2	11.9	7.2	13.4	9.2	15.1	11.2	17.1
1.3	7.5	3.3	10.2	5.3	12.0	7.3	13.4	9.3	15.2	11.3	17.2
1.4	7.7	3.4	10.3	5.4	12.0	7.4	13.5	9.4	15.3	11.4	17.3
1.5	7.9	3.5	10.4	5.5	12.1	7.5	13.6	9.5	15.3	11.5	17.4
1.6	8.0	3.6	10.5	5.6	12.2	7.6	13.7	9.6	15.4	11.6	17.5
1.7	8.1	3.7	10.6	5.7	12.3	7.7	13.8	9.7	15.5	11.7	17.6
1.8	8.3	3.8	10.7	5.8	12.3	7.8	13.8	9.8	15.6	11.8	17.7
1.9	8.4	3.9	10.8	5.9	12.4	7.9	13.9	9.9	15.7	11.9	17.8
2.0	8.6	4.0	10.9	6.0	12.5	8.0	14.0	10.0	15.9	12.0	17.9
2.1	8.7	4.1	11.0	6.1	12.6	8.1	14.1	10.1	16.0	12.1	18.0

* The 95% confidence interval is $\pm 8\%$ of the predicted age.

From Hadlock FP, Shah YP, Kanon DJ, Lindsey JV: Fetal crown-rump length: reevaluation of relation to menstrual age (5-18 weeks) with high-resolution real-time US. Radiology 182:501-505, 1992.



IG x DBP (2.6 cm - 9.7 cm)			
BPD (cm)	IG (semanas)	BPD (cm)	IG (semanas)
2.6	13.9	6.2	25.3
2.7	14.2	6.3	25.7
2.8	14.5	6.4	26.1
2.9	14.7	6.5	26.4
3.0	15.0	6.6	26.8
3.1	15.3	6.7	27.2
3.2	15.6	6.8	27.6
3.3	15.9	6.9	28.0
3.4	16.2	7.0	28.3
3.5	16.5	7.1	28.7
3.6	16.8	7.2	29.1
3.7	17.1	7.3	29.5
3.8	17.4	7.4	29.9
3.9	17.7	7.5	30.4
4.0	18.0	7.6	30.8
4.1	18.3	7.7	31.2
4.2	18.6	7.8	31.6
4.3	18.9	7.9	32.0
4.4	19.2	8.0	32.5
4.5	19.5	8.1	32.9
4.6	19.9	8.3	33.3
4.7	20.2	8.3	33.8
4.8	20.5	8.4	34.2
4.9	20.8	8.5	34.7
5.0	21.2	8.6	35.1
5.1	21.5	8.7	35.6
5.2	21.8	8.8	36.1
5.3	22.2	8.9	36.5
5.4	22.5	9.0	37.0
5.5	22.8	9.1	37.5
5.6	23.2	9.2	38.0
5.7	23.5	9.3	38.5
5.8	23.9	9.4	38.9
5.9	24.2	9.5	39.4
6.0	24.6	9.6	39.9
6.1	25.0	9.7	40.5
VARIABILITY ESTIMATES (+ 2 SD)			
12-18 wks		± 1.2 wks	
18-24 wks		± 1.7 wks	
24-30 wks		± 2.2 wks	
30-36 wks		± 3.1 wks	
36-42 wks		± 3.2 wks	
From Hadlock FP, Deter RL, Harris RB, et al: Fetal biparietal diameter: a critical re-evaluation of the relation to menstrual age by means of realtime ultrasound. J Ultrasound Med 1:97-104, 1982.			
From Hadlock FP, Deter LR, Harrist RB, et al: Estimating fetal age: computer-assisted analysis of multiple fetal growth parameters. Radiology 152:497-501, 1984.			



Diagnosis of Fetal Microcephaly

Biparietal Diameter (mm)

SD below the Mean

Week	Mean	-1	-2	-3	-4	-5
20	48	45	42	40	37	34
21	51	48	46	43	40	37
22	54	52	49	46	43	41
23	57	55	52	49	46	44
24	61	58	55	52	49	47
25	64	61	58	55	53	50
26	67	64	61	58	56	53
27	69	67	64	61	58	56
28	72	70	67	64	61	59
29	75	72	69	67	64	61
30	78	75	72	69	67	64
31	80	77	74	72	69	66
32	82	79	77	74	71	68
33	84	81	79	76	73	70
34	86	83	80	78	75	72
35	87	85	82	79	76	74
36	89	86	83	80	78	75
37	90	87	84	82	79	76
38	91	88	85	83	80	77
39	92	89	86	83	81	78
40	92	89	87	84	81	78
41	93	90	87	85	82	79
42	93	91	88	85	82	80

Chervenak FA, Jeanty P, Cantraine F et al. The diagnosis of microcephaly. Am J Obstet Gynecol 149:512-517, 1984.



CIRCUNFERÊNCIA CEFÁLICA - PERCENTIS					
IG	P 3	P 10	P 50	P 90	P 97
14	8.8	9.1	9.7	10.3	10.6
15	10.0	10.4	11.0	11.6	12.0
16	11.3	11.7	12.4	13.1	13.5
17	12.6	13.0	13.8	14.6	15.0
18	13.7	14.2	15.1	16.0	16.5
19	14.9	15.5	16.4	17.4	17.9
20	16.1	16.7	17.7	18.7	19.3
21	17.2	17.8	18.9	20.0	20.6
22	18.3	18.9	20.1	21.3	21.9
23	19.4	20.1	21.3	22.5	23.2
24	20.4	21.1	22.4	23.7	24.3
25	21.4	22.2	23.5	24.9	25.6
26	22.4	23.2	24.6	26.0	26.8
27	23.3	24.1	25.6	27.1	27.9
28	24.2	25.1	26.6	28.1	29.0
29	25.0	25.9	27.5	29.1	30.0
30	25.8	26.8	28.4	30.0	31.0
31	26.7	27.6	29.3	31.0	31.9
32	27.4	28.4	30.1	31.8	32.8
33	28.0	29.0	30.8	32.6	33.6
34	28.7	29.7	31.5	33.3	34.3
35	29.3	30.4	32.2	34.1	35.1
36	29.9	30.9	32.8	34.7	35.8
37	30.3	31.4	33.3	35.2	36.3
38	30.8	31.9	33.8	35.8	36.8
39	31.1	32.2	34.2	36.2	37.3
40	31.5	32.6	34.6	36.6	37.7

Adapted from Hadlock FP, Deter RL, Harrist RB, Park SK:
 Estimating fetal age: computer-assisted analysis of multiple
 fetal growth parameters. Radiology 152:497-501, 1984



CIRCUNFERÊNCIA ABDOMINAL - PERCENTIL					
Idade Gestac	P 3	P 10	P 50	P 90	P 97
14	6.4	6.7	7.3	7.9	8.3
15	7.5	7.9	8.6	9.3	9.7
16	8.6	9.1	9.9	10.7	11.2
17	9.7	10.3	11.2	12.1	12.7
18	10.9	11.5	12.5	13.5	14.1
19	11.9	12.6	13.7	14.8	15.5
20	13.1	13.8	15.0	16.3	17.0
21	14.1	14.9	16.2	17.6	18.3
22	15.1	16.0	17.4	18.8	19.7
23	16.1	17.0	18.5	20.0	20.9
24	17.1	18.1	19.7	21.3	22.3
25	18.1	19.1	20.8	22.5	23.5
26	19.1	20.1	21.9	23.7	24.8
27	20.0	21.1	23.0	24.9	26.0
28	20.9	22.0	24.0	26.0	27.1
29	21.8	23.0	25.1	27.2	28.4
30	22.7	23.9	26.1	28.3	29.5
31	23.6	24.9	27.1	29.4	30.6
32	24.5	25.8	28.1	30.4	31.8
33	25.3	26.7	29.1	31.5	32.9
34	26.1	27.5	30.0	32.5	33.9
35	26.9	28.3	30.9	33.5	34.9
36	27.7	29.2	31.8	34.4	35.9
37	28.5	30.0	32.7	35.4	37.0
38	29.2	30.8	33.6	36.4	38.0
39	29.9	31.6	34.4	37.3	38.9
40	30.7	32.4	35.3	38.2	39.9

Adapted from Hadlock FP, Deter RL, Harrist RB, Park SK:
 Estimating fetal age: computer-assisted analysis of multiple fetal
 growth parameters. Radiology 152:497-501, 1984.



CIRCUNFERÊNCIA ABDOMINAL x IG

Circunferência Abdominal (cm)	IG (semanas)	Circunferência Abdominal (cm)	IG (semanas)
10.0	15.6	23.5	27.7
10.5	16.1	24.0	28.2
11.0	16.5	24.5	28.7
11.5	16.9	25.0	29.2
12.0	17.3	25.5	29.7
12.5	17.8	26.0	30.1
13.0	18.2	26.5	30.6
13.5	18.6	27.0	31.1
14.0	19.1	27.5	31.6
14.5	19.5	28.0	32.1
15.0	20.0	28.5	32.6
15.5	20.4	29.0	33.1
16.0	20.8	29.5	33.6
16.5	21.3	30.0	34.1
17.0	21.7	30.5	34.6
17.5	22.2	31.0	35.1
18.0	22.6	31.5	35.6
18.5	23.1	32.0	36.1
19.0	23.6	32.5	36.6
19.5	24.0	33.0	37.1
20.0	24.5	33.5	37.6
20.5	24.9	34.0	38.1
21.0	25.4	34.5	38.7
21.5	25.9	35.0	39.2
22.0	26.3	35.5	39.7
22.5	26.8	36.0	40.2
23.0	27.3		
VARIABILITY ESTIMATES (± 2 SD)			
12-18 wks	± 1.9 wks		
18-24 wks	± 2.0 wks		
24-30 wks	± 2.2 wks		
30-36 wks	± 3.0 wks		
36-42 wks	± 2.5 wks		
<small>From Hadlock FP, Deter RL, Harrist RB, Park SK: Fetal abdominal circumference as a predictor of menstrual age. AJR 139:367, 1982. Copyright by The American Roentgen Ray Society, 1982.</small>			



FEMUR IG			
Femur Length (cm)	Menstrual Age (wks)	Fêmur Length (cm)	Menstrual Age (wks)
1.0	12.8	4.5	24.5
1.1	13.1	4.6	24.9
1.2	13.4	4.7	25.3
1.3	13.6	4.8	25.7
1.4	13.9	4.9	26.1
1.5	14.2	5.0	26.5
1.6	14.5	5.1	27.0
1.7	14.8	5.2	27.4
1.8	15.1	5.3	27.8
1.9	15.4	5.4	28.2
2.0	15.7	5.5	28.7
2.1	16.0	5.6	29.1
2.2	16.3	5.7	29.6
2.3	16.6	5.8	30.0
2.4	16.9	5.9	30.5
2.5	17.2	6.0	30.9
2.6	17.6	6.1	31.4
2.7	17.9	6.2	31.9
2.8	18.2	6.3	32.3
2.9	18.6	6.4	32.8
3.0	18.9	6.5	33.3
3.1	19.2	6.6	33.8
3.2	19.6	6.7	34.2
3.3	19.9	6.8	34.7
3.4	20.3	6.9	35.2
3.5	20.7	7.0	35.7
3.6	21.0	7.1	36.2
3.7	21.4	7.2	36.7
3.8	21.8	7.3	37.2
3.9	22.1	7.4	37.7
4.0	22.5	7.5	38.3
4.1	22.9	7.6	38.8
4.2	23.3	7.7	39.3
4.3	23.7	7.8	39.8
4.4	24.1	7.9	40.4

VARIABILITY ESTIMATES (+ 2 SD)	
12-18 wks	± 1.0 wks
18-24 wks	± 1.8 wks
24-30 wks	± 2.0 wks
30-36 wks	± 2.4 wks
36-42 wks	± 3.2 wks

From Hadlock FP, et al: Fetal femur length as a predictor of menstrual age: sonographically measured. Amer J Roentgenol 138:875-878, 1982.			
--	--	--	--



Marcadores US para Trissomia 21		
Sonographic Finding	Criteria	Likelihood Ratio Assigned
Structural Defect	cardiac defect, cystic hygroma with or without hydrops, cerebral ventricular dilatation	25
Nuchal Thickening	> 5 mm in the antero-posterior plane	18.6*
Echogenic Bowel	subjectively increased, grades 2 or 3	5.5*
Short Humerus	observed/predicted ratio \leq 0.89	2.5
Short Femur	observed/predicted ratio \leq 0.91	2.2*
Echogenic Intracardiac Focus	present or absent	2
Renal Pyelectasis	> 3 mm in the antero-posterior plane	1.6*
Normal Ultrasound Scan	none of the above	0.4
Likelihood ratio for each ultrasound marker is defined as: sensitivity / false-positive rate as an isolated finding.		
Asterisk indicates likelihood ratios assigned from data of Snijders RJM, Nicolaides KH. Ultrasound Markers for Fetal Chromosomal Defects. Carnforth, UK: Parthenon Publishing, 1996. Remaining data from Nyberg et al's institution.		
From: Nyberg DA, Luthy DA, Resta RG, Nyberg BC, Williams MA. Age-adjusted ultrasound risk assessment for fetal Down's syndrome during the second trimester: description of the method and analysis of 142 cases. Ultrasound Obstet Gynecol 12:8-14, 1998.		



Ossos Longos Fetais (mm) x IG																									
		Tíbia (%)				Fíbula (%)				Femur (%)				Úmero (%)				Ulna (%)				Rádio (%)			
Sem	5th	50th	95th	5th	50th	95th	5th	50th	95th	5th	50th	95th	5th	50th	95th	5th	50th	95th	5th	50th	95th				
12	-	7	-	-	6	-	4	8	13	-	9	-	-	7	-	-	7	-	-	7	-				
13	-	10	-	-	9	-	6	11	16	6	11	16	5	10	15	6	10	14	-	-	-	-			
16	12	17	22	13	18	23	15	20	24	15	20	25	13	18	23	13	18	22	-	-	-	-			
17	15	20	25	13	21	28	18	23	27	18	22	27	16	21	26	14	20	26	-	-	-	-			
18	17	22	27	15	23	31	21	25	30	20	25	30	19	24	29	15	22	29	-	-	-	-			
19	20	25	30	19	26	33	24	28	33	23	28	33	21	26	31	20	24	29	-	-	-	-			
20	22	27	33	21	28	36	26	31	36	25	30	35	24	29	34	22	27	32	-	-	-	-			
21	25	30	35	24	31	37	29	34	38	28	33	38	26	31	36	24	29	33	-	-	-	-			
22	27	32	38	27	33	39	32	36	41	30	35	40	28	33	38	27	31	34	-	-	-	-			
23	30	35	40	28	35	42	35	39	44	33	38	42	31	36	41	26	32	39	-	-	-	-			
24	32	37	42	29	37	45	37	42	46	35	40	45	33	38	43	26	34	42	-	-	-	-			
25	34	40	45	34	40	45	40	44	49	37	42	47	35	40	45	31	36	41	-	-	-	-			
26	37	42	47	36	42	47	42	47	51	39	44	49	37	42	47	32	37	43	-	-	-	-			
27	39	44	49	37	44	50	45	49	54	41	46	51	39	44	49	33	39	45	-	-	-	-			
28	41	46	51	38	45	53	47	52	56	43	48	53	41	46	51	33	40	48	-	-	-	-			
29	43	48	53	41	47	54	50	54	59	45	50	55	43	48	53	36	42	47	-	-	-	-			
30	45	50	55	43	49	56	52	56	61	47	51	56	44	49	54	36	42	47	-	-	-	-			
31	47	52	57	42	51	59	54	59	63	48	53	58	46	51	56	38	44	50	-	-	-	-			
32	48	54	59	42	52	63	56	61	65	50	55	60	48	53	58	37	45	53	-	-	-	-			
33	50	55	60	46	54	62	58	63	67	51	56	61	49	54	59	41	46	51	-	-	-	-			
34	52	57	62	46	55	65	60	65	69	53	58	63	51	56	61	40	47	53	-	-	-	-			
35	53	58	64	51	57	62	62	67	71	54	59	64	52	57	62	41	48	54	-	-	-	-			
36	55	60	65	54	58	63	64	68	73	56	61	65	53	58	63	39	48	57	-	-	-	-			
37	56	61	67	54	59	65	65	70	74	57	62	67	55	60	65	45	49	53	-	-	-	-			

From: Sherer DM, Ghezzi F, Cohen J, Romero R. Fetal Skeletal Anomalies in Sonography in Obstetrics and Gynecology: Principles and Practice Ed by AC Fleischer et al., Appleton & Lange, Stamford, 1996.



Índice de Líquido Amniótico (Moore & Cayle)						
ILA (mm) Percentis						
Week	2.5th	5th	50th	95th	97.5th	Number
16	73	79	121	185	201	32
17	77	83	127	194	211	26
18	80	87	133	202	220	17
19	83	90	137	207	225	14
20	86	93	141	212	230	25
21	88	95	143	214	233	14
22	89	97	145	216	235	14
23	90	98	146	218	237	14
24	90	98	147	219	238	23
25	89	97	147	221	240	12
26	89	97	147	223	242	11
27	85	95	146	226	245	17
28	86	94	146	228	249	25
29	84	92	145	231	254	12
30	82	90	145	234	258	17
31	79	88	144	238	263	26
32	77	86	144	242	269	25
33	74	83	143	245	274	30
34	72	81	142	248	278	31
35	70	79	140	249	279	27
36	68	77	138	249	279	39
37	66	75	135	244	275	36
38	65	73	132	239	269	27
39	64	72	127	226	255	12
40	63	71	123	214	240	64
41	63	70	116	194	216	162
42	63	69	110	175	192	30

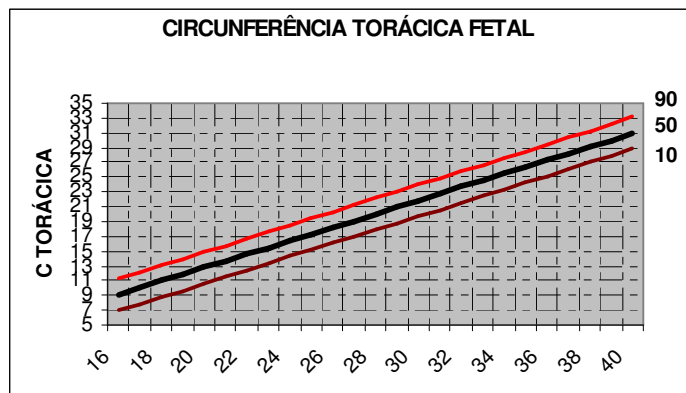
Moore TR, Cayle JE. The amniotic fluid index in normal human pregnancy. Am J Obstet Gynecol 162:1168-73, 1990.



Circunferência Torácica Fetal											
IG	No.	2.5%	5%	10%	25%	50%	75%	90%	95%	97.5%	
16	6	5,9	6,4	7	8	9,1	10	11	12	12,4	
17	22	6,8	7,3	7,9	8,9	10	11	12	13	13,3	
18	31	7,7	8,2	8,8	9,8	11	12	13	14	14,2	
19	21	8,6	9,1	9,7	11	12	13	14	15	15,1	
20	20	9,5	10	11	12	13	14	15	16	16	
21	30	10,4	11	12	13	14	15	16	16	16,9	
22	18	11,3	12	13	14	15	16	17	17	17,8	
23	21	12,2	13	13	14	16	17	18	18	18,8	
24	27	13,2	14	14	15	16	18	19	19	19,7	
25	20	14,1	15	15	16	17	18	19	20	20,6	
26	25	15	16	16	17	18	19	20	21	21,5	
27	24	15,9	16	17	18	19	20	21	22	22,4	
28	24	16,8	17	18	19	20	21	22	23	23,3	
29	24	17,7	18	19	20	21	22	23	24	24,2	
30	27	18,6	19	20	21	22	23	24	25	25,1	
31	24	19,5	20	21	22	23	24	25	26	26	
32	28	20,4	21	22	23	24	25	26	26	26,9	
33	27	21,3	22	23	24	25	26	27	27	27,8	
34	25	22,2	23	23	24	26	27	28	28	28,7	
35	20	23,1	24	24	25	26	28	29	29	29,6	
36	23	24	25	25	26	27	28	29	30	30,6	
37	22	24,9	26	26	27	28	29	30	31	31,5	
38	21	25,9	26	27	28	29	30	31	32	32,4	
39	7	26,8	27	28	29	30	31	32	33	33,3	
40	6	27,7	28	29	30	31	32	33	34	34,2	

Measurements in centimeters

From Chitkara U, Rosenberg J, Chervenak et al.
 Prenatal sonographic assessment of the fetal
 thorax: Normal values. Am J Obstet Gynecol
 156:1069, 1987.





MEDIDA DO OSSO NASAL

Week	2.5th	5th	50th	95th	97.5th	Number
11	1.3	1.4	2.3	3.3	3.4	16
12	1.7	1.8	2.8	4.2	4.3	54
13	2.2	2.3	3.1	4.6	4.8	59
14	2.2	2.5	3.8	5.3	5.7	82
15	2.8	3.0	4.3	5.7	6.0	103
16	3.2	3.4	4.7	6.2	6.2	134
17	3.7	4.0	5.3	6.6	6.9	203
18	4.0	4.3	5.7	7.0	7.3	252
19	4.6	5.0	6.3	7.9	8.2	388
20	5.0	5.2	6.7	8.3	8.6	440
21	5.1	5.6	7.1	9.0	9.3	322
22	5.6	5.8	7.5	9.3	10.2	208
23	6.0	6.4	7.9	9.6	9.9	157
24	6.6	6.8	8.3	10.0	10.3	121
25	6.3	6.5	8.5	10.7	10.8	123
26	6.8	7.4	8.9	10.9	11.3	96
27	7.0	7.5	9.2	11.3	11.6	80
28	7.2	7.6	9.8	12.1	13.4	103
29	7.2	7.7	9.8	11.8	12.3	95
30	7.3	7.9	10.0	12.6	13.2	104
31	7.9	8.2	10.4	12.6	13.2	92
32	8.1	8.6	10.5	13.6	13.7	66
33	8.6	8.7	10.8	12.8	13.0	54
34	9.0	9.1	10.9	12.8	13.5	41
35	7.5	8.5	11.0	14.1	15.0	37
36	7.3	7.8	10.8	12.8	13.6	40
37	8.4	8.7	11.4	14.5	15.0	36
38	9.2	9.3	11.7	15.7	16.6	13
39	9.1	9.2	10.9	14.0	14.8	12
40	10.3	10.4	12.1	14.5	14.7	6

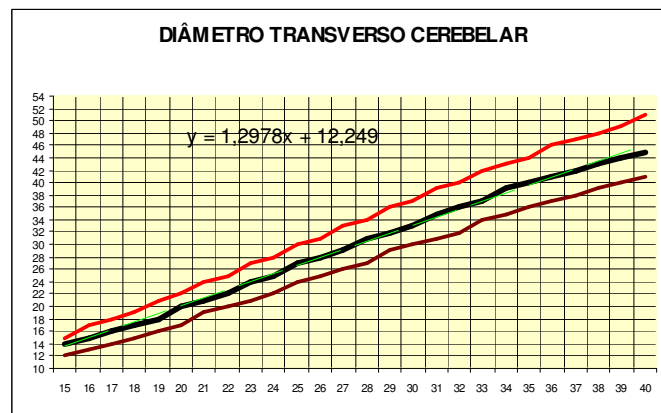
Sonek 2003

Gestational Age (weeks)	2.5th %	5th %	50th %
16 - 16+6	3.7	4.1	5.9
17 - 17+6	4.0	4.3	6.2
18 - 18+6	4.3	4.6	6.5
19 - 19+6	4.5	4.9	6.8
20 - 20+6	4.8	5.2	7.0
21 - 20+6	5.1	5.4	7.3
22 - 22+6	5.4	5.7	7.6
23 - 23+6	5.6	6.0	7.8
24	5.8	6.1	8.0

Bunduki, 2003

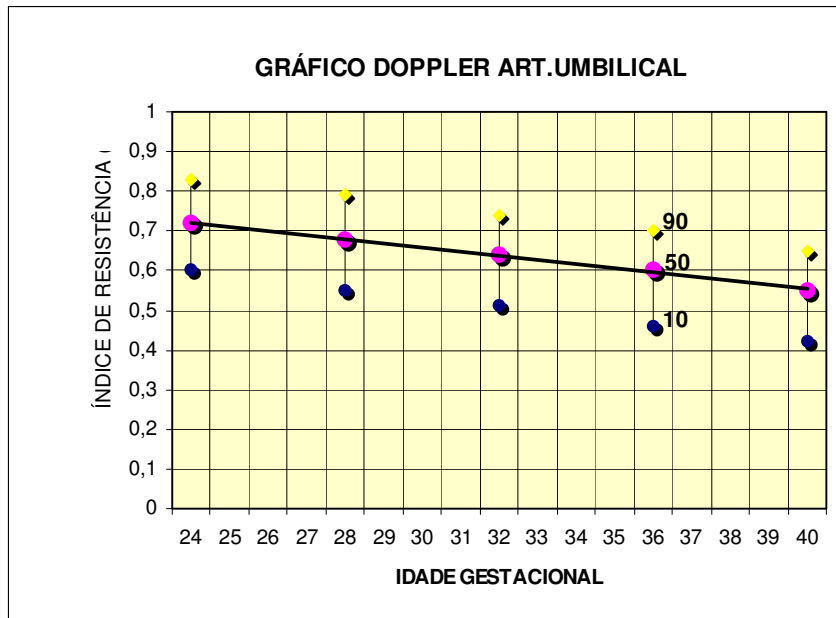


Diâmetro Transverso Cerebelar (mm)			
IG	P10	P50	P90
15	12	14	15
16	13	15	17
17	14	16	18
18	15	17	19
19	16	18	21
20	17	20	22
21	19	21	24
22	20	22	25
23	21	24	27
24	22	25	28
25	24	27	30
26	25	28	31
27	26	29	33
28	27	31	34
29	29	32	36
30	30	33	37
31	31	35	39
32	32	36	40
33	34	37	42
34	35	39	43
35	36	40	44
36	37	41	46
37	38	42	47
38	39	43	48
39	40	44	49
40	41	45	51





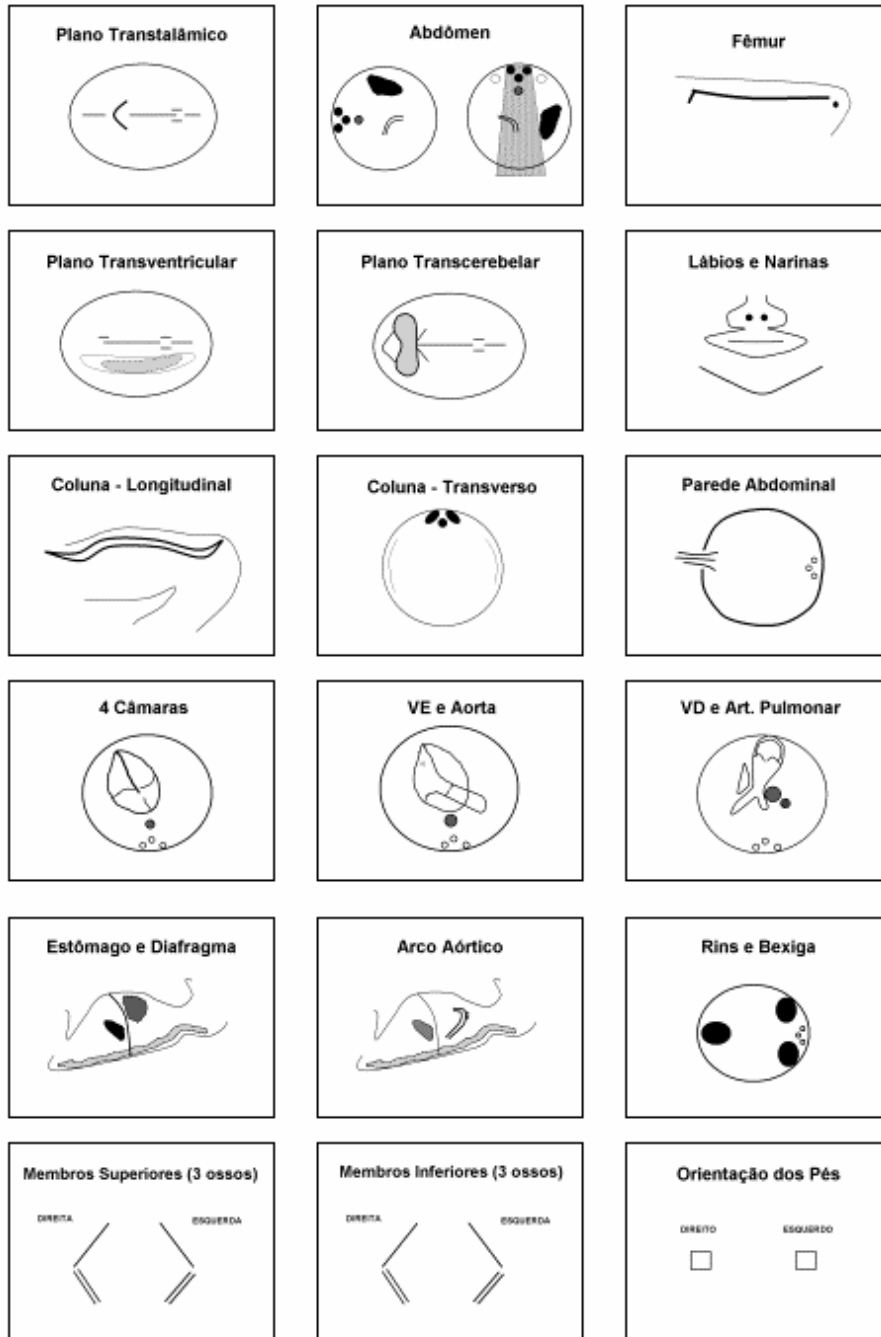
DOPPLER ART.UMBILICAL (IR)			
IG	10%	50%	90%
24	0,6	0,72	0,83
25			
26			
27			
28	0,55	0,68	0,79
29			
30			
31			
32	0,51	0,64	0,74
33			
34			
35			
36	0,46	0,6	0,7
37			
38			
39			
40	0,42	0,55	0,65



FGUS

ESTUDO MORFOLÓGICO FETAL BÁSICO

Jorge Tellez, 2008



Modificado de: *Royal College of Obstetricians and Gynaecologists, Ultrasound Screening for Fetal Abnormalities, London, Supplement, July 2000*